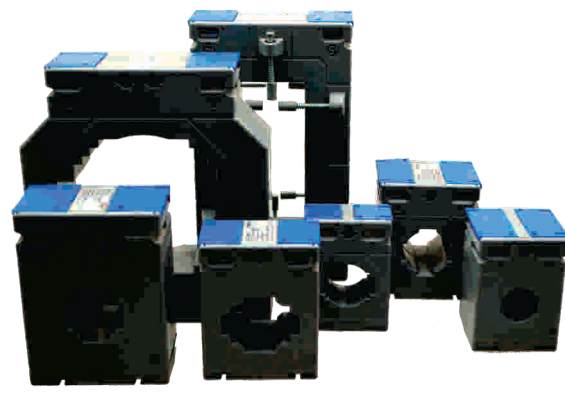
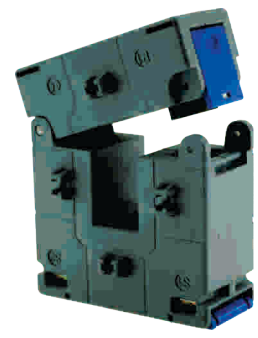


- 10% Glass filled polycarbonate housing (UL 94 V-0)
- Easy and quick interchangeable scale
- Unique mounting system with easy replacement of glass and bezel
- Knife edge pointer
- Available Sizes: 48, 72, 96, 144 Sqm

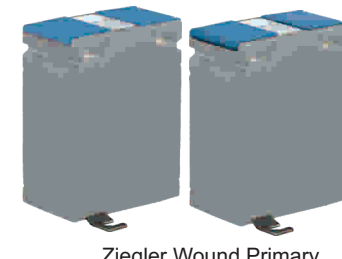
- Applicable Standard: IEC / EN 60044-1, BS 3938, IS 2705-1
- Type: Wound Primary, Busbar Type, Tape Wound, Protection Type, Split Core.
- Accuracy Class: 0.2, 0.2S for laboratory and power measurement, 0.5, 0.5S for accurate measuring, kWh, 1 for general measurement, 3 for Indicating Instruments
- System Voltage: 720V maximum
- Rated Primary Rating: 1A to 7500A
- Rated secondary output: 5A standard (1A on request)
- Cost effective molded case current transformer.
- Various mounting options.
- Wire sealable terminal covers.
- 10% Glass filled polycarbonate housing (UL 94 V-0)
- Supplied with accredited routine test certificates.
- TW Series Type CT's are UL Approved.



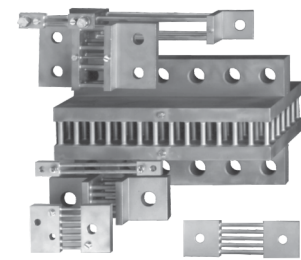
Ziegler Current Transformer Series



Ziegler Split Core



Ziegler Wound Primary Current Transformer Series



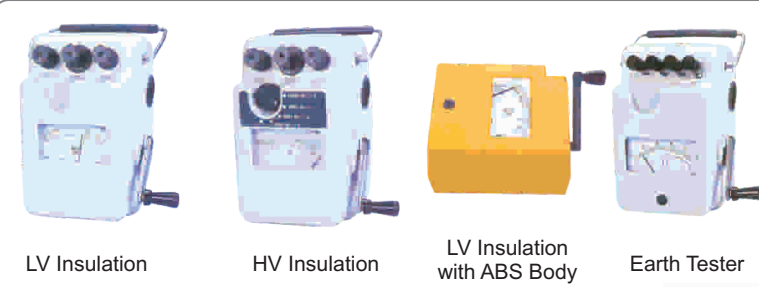
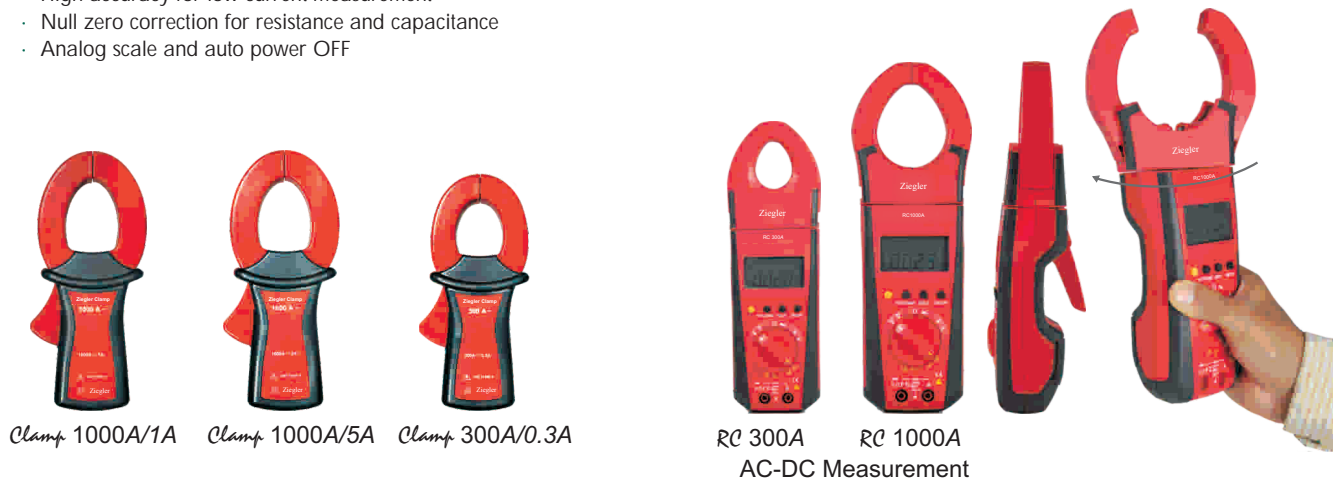
Shunts

- Available from 1A to 15000A
- Available in Voltage Drop: 50mV/60mV/75mV/100mV/150mV
- Accuracy class: 0.5 or 1 as per IEC51

- Automatic terminal blocking system ABS
- PC Interface with Ziegler 100 Software
- TRMS Measurement
- MIN MAX value storage
- Protective holster for rough duty
- Continuity Test
- Power economizing circuit
- Auto ranging / manual range selection
- Backlit (Optional)
- Supplied with accredited test certificates
- 3 years warranty
- CAT IV (600V) /CAT III- (1000V)



- Unique patented design
- Large jaw opening with 180° rotation to avoid difficult measuring positions
- Narrow housing for firm grip and easy to carry
- High accuracy for low current measurement
- Null zero correction for resistance and capacitance
- Analog scale and auto power OFF



- Broad Insulation measuring range from 1GΩ to 1TΩ
- Easy to ready logarithmic display
- voltage measurement from 100V to 5000V
- Hands free continuity testing
- Supplied with accredited test Certificate
- Storage
- Automatic Discharge
- CAT II (600V) & CAT III (300V)



RI 10 RI 20 RM ISO 30



RI 5000A / K / M

**Ziegler**  
Redefine Innovative Metering

**Ziegler**  
Redefine Innovative Metering

**ZIEGLER INSTRUMENTS**

Schnepfenreuther Weg 6, D-90425 Nurnberg, Germany.  
Tel.: +49911 3849245  
Fax.: +49911 3226212  
Email: info@ziegler-instruments.com  
Website: www.ziegler-instruments.com



## Ziegler POWER SUPPLIES

**NEW**

Ziegler PS1 505, Ziegler PS1 1206, Ziegler PS1 1214, Ziegler PS1 1216, Ziegler PS1 2403, Ziegler PS1 2405, Ziegler PS1 2408, Ziegler PS1 2414, Ziegler PS1 2425, Ziegler PS1 4804, Ziegler PS1 4807, Ziegler PS1 4812, Ziegler PS2 2405, Ziegler PS2 2408, Ziegler PS2 2414, Ziegler PS3 2425, Ziegler PS3 2430, Ziegler PS3 2440

- Competitive price and performance ratio
- 3 Protective functions: (a) Hiccup mode (b) Fold back (c) Restart after main
- Declared ambient temperature operation field i.e. 40, 50 & 60
- Only one product for 230-400-500V AC
- Standards: EN 60204-1, EN 60529 (IP 20 protection)
- Din Rail mounting
- Small size
- Out put voltage: 5, 12, 24, 48V DC
- Protection: Short circuit/over voltage / overload
- Power o/p: (a) Phase 1: 40W to 60W for 24V DC (b) Phase 2: 24W to 300W for 24V DC (c) Phase 3: 24W to 600W for 24V DC
- Efficiency: ~ 50% of rated current

## Ziegler DIGITAL PANEL METERS

Ziegler LCDDPM Series

Z 312 3 1/2 digit  
Z 412 4 1/2 digit (Size - 24x72mm)

4 digit fully programmable AC Ammeter, Volt Meter (Size - 48x96mm, 96x96mm)

3 1/2 digit AC Ammeter / Volt Meter (48x96mm / 96x96mm)

3.5 digit Frequency DPM (Size - 48x96mm, 96x96mm)

4 1/2 digital DC Ammeter, Volt Meter (Size - 48x96mm, 96x96mm)

4 1/2 digit, 1" display DC Ammeter / Volt Meter (Size - 72x144mm)

4 digit Power / Power Factor DPM (Size - 96x96mm)

3 1/2 digit Temperature DPM (Size - 48x96mm)

Ziegler Eine Series

Ziegler Eine Series 3 Phase. (Size - 96x96mm)

Ziegler Eine Series 1 Phase. (Size - 96x96mm)

3 1/2 digital 0...20A direct AC / DC Ammeter (Size - 48x96mm)

3 1/2 digit DC Ammeter / Volt Meter (Size - 24x96mm)

- Available type: AC, DC, Current and Voltage, frequency, temperature
- 1ph, 3ph programmable DPM
- Universal aux. supply Range
- Enclosure protection for dust & water
- EMC compatibility
- TRMS Measurement
- 4 digit ultra bright LED display

## Ziegler MULTIFUNCTION METERS

**NEW**

Ziegler mfm 3480

- Touch Screen Multicolor Graphics LCD
- User selectable 3 phase 3W or 4W
- Phase reversal indication
- True RMS measurement
- Pictorial representation of all 3 Phases (Voltage & Current) - Phaser Diagram & Waveforms.
- Programmable Energy format & Energy rollover count
- Analog Outputs.
- MODBUS (RS485) Output
- Pulse Output
- Universal aux supply (100-250V AC / DC Aux.)

Delta VAF 3L, Delta VAF 1L, Delta Power, Delta Energy, mfm 3410, mfm 3420, mfm 3430, mfm 3440, mfm 6100, Energy Meter 3490SS, Energy Meter 3490, Energy Meter 3490DS, Accessory- RS485 to 232 Converter, Accessory- RS485 - USB Converter

- Measure more than 61 parameters including V, I, Hz, kW, kVAR, THD, kWh etc.
- Four function keys enable instant access to the desired parameter screen for Delta
- Optional outputs: analog, pulse and RS 485 MODBUS/ N2 Protocol
- Ziegler EMS – Energy Management Software
- Wide Input (100-500 V LL programmable)-Delta
- Universal aux supply (40-300V AC DC Aux.)- Delta
- Click fit arrangement - Delta

## Ziegler ENERGY MANAGEMENT SYSTEM

- Plug & play enterprise level SCADA product.
- Multi user login, password protection for data acquisition.
- Online monitoring for all the feeders.
- Auto mailing facility of generated reports.
- Reports in different formats i.e. PDF, EXCEL, WORD, TEXT etc.
- Customised screens and reports.

## Ziegler TRANSDUCCERS

Multifunction Transducer with Modbus and Analog output Ziegler Trans

Current / Voltage Transducer Ziegler Pro-I / Ziegler Pro-V

Frequency Transducer Ziegler Pro-Hz

Power Transducer Ziegler Pro-P / PF / Ø

Voltage/Current Transducer Ziegler Pro-CV / CA

Active or Reactive Power Transducer Ziegler P11

Power Factor Transducer- Ziegler C11

Phase Angle Difference Transducer Ziegler C12

Current / Voltage Transducer Ziegler E13

Current / Voltage Transducer Ziegler E15

Self Powered Average Transducer Ziegler Ixx/Vxx

Frequency Ziegler F11/F12

Ziegler Ducer Programmable M20/M24 / M40/ M30/M42/M01/M00

- Type: Current and Voltage Transducers with single, multiple input-output
- 1/3ph, 2/3/4 wire, programmable multi transducers
- Meets requirements of international standard IEC688 for accuracy
- Insulation level of 3.7kV/4kV
- Electrical Isolation between all transducer connections
- Option of bent transformation characteristics
- Output short circuit & open circuit proof
- PC simulation

## Ziegler ISOLATORS

- Measuring ranges configurable with DIP switch and potentiometer
- Red LED's indicator: an open or short-circuits
- Universal (AC/DC) power supply

DC Signal Isolator - ZI 101

Programmable Universal Transmitter Ziegler Transducer V604-II

Programmable Tap position transducer Ziegler Transducer TP-25K

Passive DC Signal Isolator Ziegler TI816

Passive DC Signal Isolator Ziegler TI807

Isolating Amplifier Ziegler TV808

Configurable Transmitter Ziegler PT602

Programming Cable PRKAB 600/601 for V604 and Ziegler Pro series